

**INDUCTIVE PROXIMITY SWITCH**

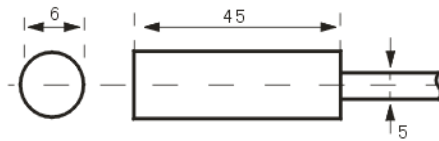
Outward appearance code

**LM6**

Appearance



Dimension



Flush	Detection distance		1mm	
	DC 6	NPN	NO	3001NA
			NC	3001NB
			NO+NC	
	~ 36 V	PNP	NO	3001PA
			NC	3001PB
			NO+NC	
		two wire system	NO	3001LA
			NC	3001LB
	AC 90 ~ 250 V	SRC Control label silicon	NO	2001A
			NC	2001B
			NO+NC	
		Relay output		
Detection distance		1.5mm		
DC	NPN	NO	3002NA	
		NC	3002NB	
		NO+NC		

Non-flush	6 ~ 36 V	PNP	NO	3002PA
			NC	3002PB
			NO+NC	
	V	two wire system	NO	3002LA
			NC	3002LB
	AC 90 ~ 250 V	SRC Control label silicon	NO	2002A
			NC	2002B
			NO+NC	
		Relay output		
	Control output	DC		150mA
SCR/Relay				
Output voltage dropDC/AC			DC<3V AC<10V	
Consumption current			DC<15mA AC<10mA	
Standard detected object			6×6×1(A3 iron)	
Repeated precision			0.01	
DC/AC Response frequency			500Hz	
Working environment temperature			-25℃~75℃	
Insulation resistance			≥30MΩ	
Shell material			Stainless steel	
Protection grade			IEC standard IP67	
Alternative model at home and abroad				